
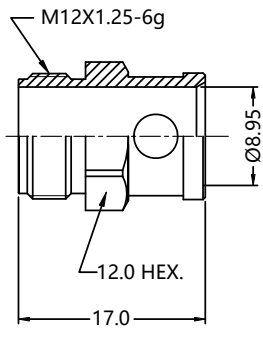
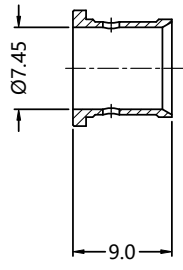
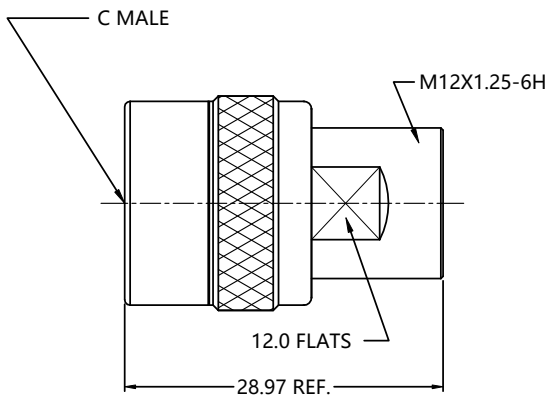
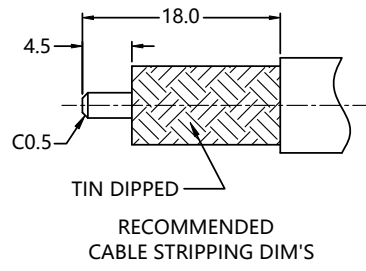


REV.	DESCRIPTION	ECN NO.	NAME	DATE	 ALL PARTS MUST MEET TO RoHS REQUIREMENTS
A0	首次发行	N/A	YWD	2017-12-21	
A1	NEW FRAME	N/A	HYH	2022-11-07	



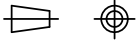

MATERIALS AND PLATING		UNIT: MICRO-INCHES
PART NAME	MATERIALS	PLATING
BODY/SHELL	STAINLESS STEEL SUS316L	PASSIVATION
CONTACT PIN	Be-Cu C17300	GOLD PL. 50u"/NICKEL/COPPER
INSULATOR	PTFE	N/A
GASKET	SILICONE	RED

ELECTRICAL CHARACTERISTICS	
IMPEDANCE	50 Ω
VOLTAGE RATING	500 V(rms)
FREQUENCY RANGE	DC ~ 3 GHz
DIELECTRIC WITHSTANDING VOLTAGE	> 1500 V
CONTACT RESISTANCE	CENTER CONTACT
	OUTER CONTACT
INSULATION RESISTANCE	> 5000 MΩ
INSERTION LOSS	N/A
RF-LEAKAGE	N/A
VSWR	< 1.30
3RD INTERMODULATION	N/A

MECHANICAL CHARACTERISTICS	
FORCE TO ENGAGE AND DISENGAGE	N/A
CENTER CONTACT RETENTION FORCE	> 6 lbs
COUPLING PROOF TORQUE	N/A
COUPLING NUT RETENTION FORCE	> 100 lbs
DURABILITY	> 500 cycles

ENVIRONMENTAL PARAMETER	
TEMPERATURE RANGE	-55 °C ~ +125 °C
WATERPROOF LEVEL	IP68(10 M WATER DEPTH) INTERNAL INTERFACE TO THE WIRE ENTRANCE

*** CUSTOMER OUTLINE DRAWING**

UNLESS OTHERWISE SPECIFIED: 1) EDGES : C0.15 MAX ; 2) REMOVE ALL BURRS ; 3) SURFACE ROUGHNESS : Ra1.6 ; 4) UNITS : mm ; 5) DIMENSIONS TOLERANCES DECIMALS : .x ±0.3 .xx ±0.2 .xxx±0.1; ANGLES : ± 5°.	THIRD ANGLE PROJECTION		 TITLE : C MALE S/T CONNECTOR FOR SLB-800-LK CABLE, 50 Ω DRAWING NO. : 5CCM15S-A568 COMPANY WEBSITE : www.slkcorp.com
	APPROVED :		
	CHECKED :	SCALE : 2: 1	
	DRAWING :	DATE : 2022-11-07	
PAGE : 1/1			