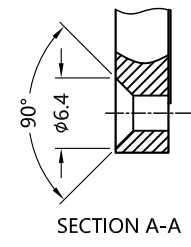
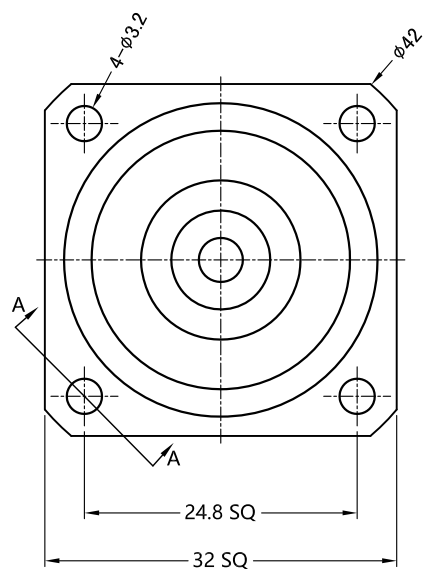
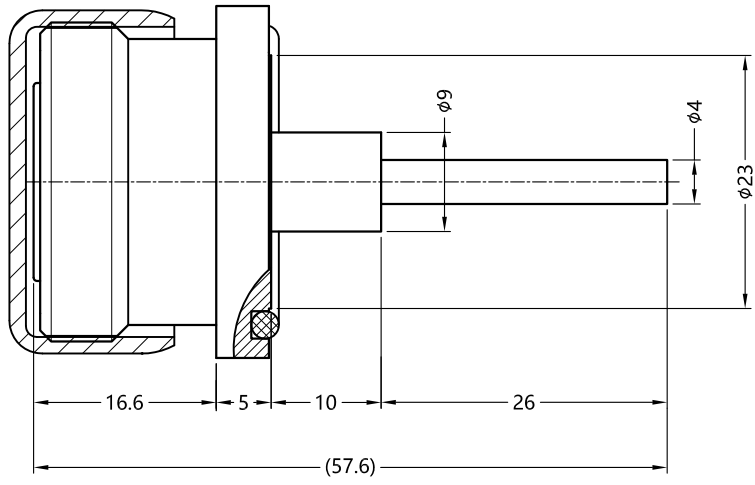


REV.	DESCRIPTION	ECN NO.	NAME	DATE
0	FIRST EDITION	N/A	XIN	2010-09-14
1	REPLACE FRAME	N/A	Kevin.Li	2020-08-17



ALL PARTS MUST MEET TO RoHS REQUIREMENTS



MATERIALS AND PLATING		UNIT: MICRO-INCHES
PART NAME	MATERIALS	PLATING
BODY	BRASS	ALBALOY 80u"/COPPER
INSULATOR	PTFE ASTM-D-1710	N/A
CONTACT PIN	PHOSPHOR BRONZE	SILVER 200u"/COPPER
GASKET	SILICONE	RED

ELECTRICAL CHARACTERISTICS	
IMPEDANCE	50 Ω
VOLTAGE RATING	2700 V(rms)
FREQUENCY RANGE	0 ~ 7.5 GHz
DIELECTRIC WITHSTANDING VOLTAGE	>3000 V
CONTACT RESISTANCE	CENTER CONTACT <0.4 mΩ
	OUTER CONTACT <1.5 mΩ
INSULATION RESISTANCE	>10000 MΩ
INSERTION LOSS	N/A
VSWR	≤1.1@0-3GHz
3RD INTERMODULATION	≤-160dBc (2X43dBm/910MHz)

MECHANICAL CHARACTERISTICS	
FORCE TO ENGAGE AND DISENGAGE	N/A
CENTER CONTACT RETENTION FORCE	> 45 lbs
RECOMMENDED COUPLING TORQUE	N/A
COUPLING NUT RETENTION FORCE	N/A
DURABILITY	> 500cycles

ENVIRONMENTAL PARAMETER	
TEMPERATURE RANGE	-40°C- +150°C
THERMAL SHOCK	MIL- STD 202, Meth. 107,Cond. B
VIBRATION	MIL- STD 202, Meth. 204,Cond. A
CLIMATIC CLASS	IEC 60068 65/165/21

*** CUSTOMER OUTLINE DRAWING**

UNLESS OTHERWISE SPECIFIED:
 1) EDGES : C0.15 MAX ;
 2) REMOVE ALL BURRS ;
 3) SURFACE ROUGHNESS : Ra1.6 ;
 4) UNITS : mm ;
 5) DIMENSIONS TOLERANCES
 DECIMALS : .x ±0.3 .xx ±0.2 .xxx±0.1;
 ANGLES : ± 5°.

THIRD ANGLE PROJECTION		
APPROVED :	CUSTOMER P/N :	-
CHECKED :	SCALE :	-
DRAWING :	DATE :	2020-08-17
PAGE :		1/1

TITLE : 7/16 FEMALE S/T SOLDER, 4-HOLE FLANGE,50Ω
 DRAWING NO. : 5A7F55S-P01-003
 COMPANY WEBSITE : www.slkcorp.com

CUSTOMER OUTLINE DRAWING