
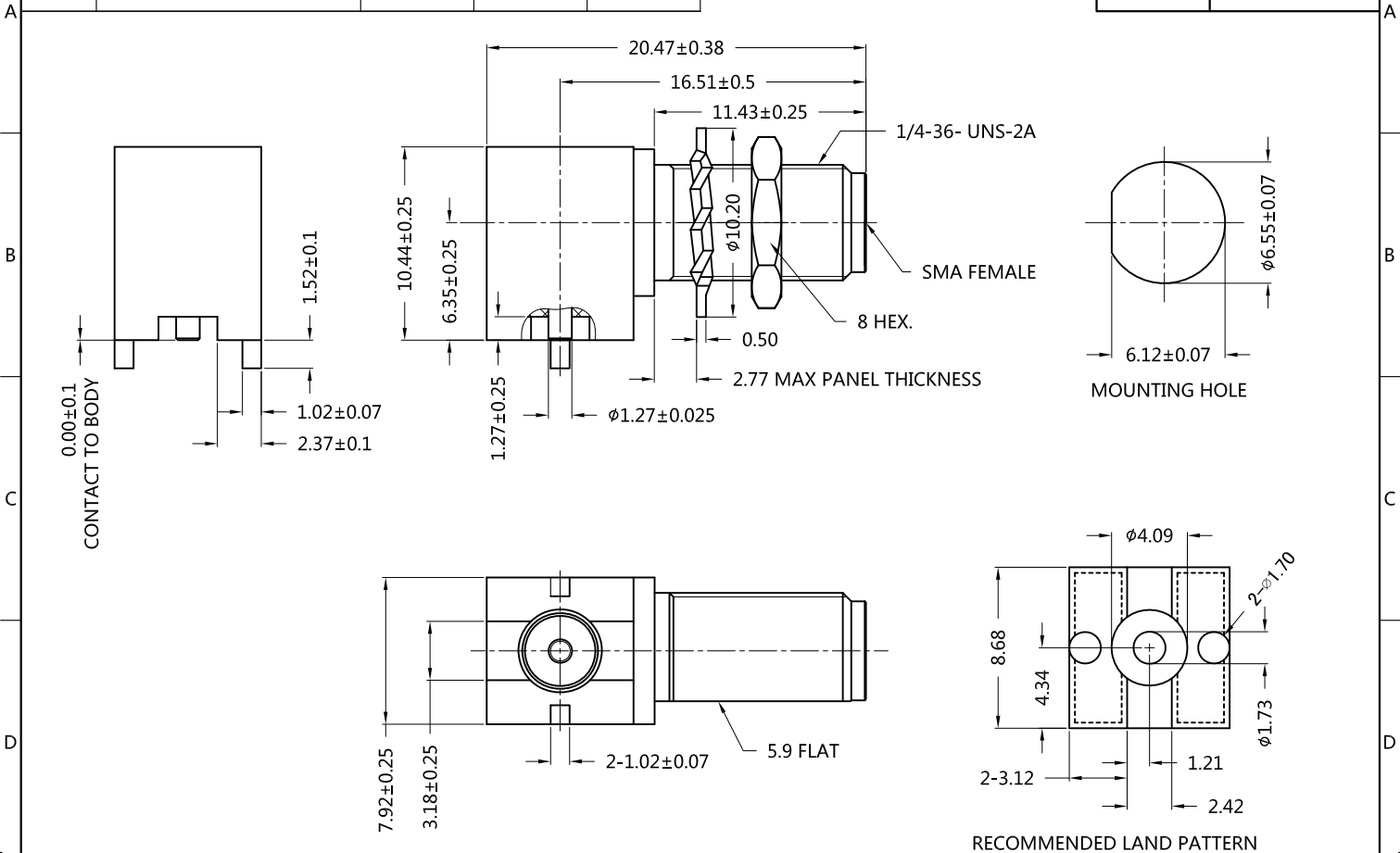


REV.	DESCRIPTION	ECN NO.	NAME	DATE	 ALL PARTS MUST MEET TO RoHS REQUIREMENTS
0	FIRST EDITION	N/A	LEI CHAO	2020-10-26	



MATERIALS AND PLATING		UNIT: MICRO-INCHES
PART NAME	MATERIALS	PLATING
BODY	BRASS C3604	GOLD 10 u" MIN./NICKEL/COPPER
INSULATOR	PTFE ASTM-D-1710	N/A
CONTACT PIN	Be-Cu C17300	GOLD 30 u" MIN./NICKEL/COPPER
WASHER	BRASS C2680	GOLD 10 u" MIN./NICKEL/COPPER
NUT	BRASS C3604	GOLD 10 u" MIN./NICKEL/COPPER

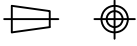
ELECTRICAL CHARACTERISTICS	
IMPEDANCE	50 Ω
VOLTAGE RATING	335 V(rms)
FREQUENCY RANGE	DC ~ 18 GHz
DIELECTRIC WITHSTANDING VOLTAGE	>1000 V
CONTACT RESISTANCE	CENTER CONTACT
	OUTER CONTACT
INSULATION RESISTANCE	>5000 MΩ
INSERTION LOSS	N/A
VSWR	<1.35

MECHANICAL CHARACTERISTICS	
FORCE TO ENGAGE AND DISENGAGE	N/A
CENTER CONTACT RETENTION FORCE	> 6 lbs
RECOMMENDED COUPLING TORQUE	N/A
COUPLING NUT RETENTION FORCE	N/A
DURABILITY	> 500cycles

ENVIRONMENTAL PARAMETER	
TEMPERATURE RANGE	-65 °C ~ +165 °C
THERMAL SHOCK	US MIL- STD 202, Meth. 107, Cond. B
CORROSION	US MIL- STD 202, Meth. 101, Cond. B
SHOCK	US MIL- STD 202, Meth. 213, Cond. I
VIBRATION	US MIL- STD 202, Meth. 204, Cond. D
MOISTURE RESISTANCE	US MIL- STD 202, Meth. 106

*** CUSTOMER OUTLINE DRAWING**

UNLESS OTHERWISE SPECIFIED:
 1) EDGES : C0.15 MAX ;
 2) REMOVE ALL BURRS ;
 3) SURFACE ROUGHNESS : Ra1.6 ;
 4) UNITS : mm ;
 5) DIMENSIONS TOLERANCES
 DECIMALS : .x ±0.3 .xx ±0.2 .xxx±0.1;
 ANGLES : ± 5°.

THIRD ANGLE PROJECTION		
APPROVED :	CUSTOMER P/N :	
CHECKED :	SCALE :	
DRAWING :	DATE :	
PAGE : 1/1		



TITLE : SMA FEMALE R/A FOR PCB SMT,50Ω
 DRAWING NO. : 5MAF25R-P21-002
 COMPANY WEBSITE : www.slkcorp.com

CUSTOMER OUTLINE DRAWING